

STAND-BY GENERATOR SPECIFICATIONS

BI-FUEL GENERATOR, 250KW, 120/208V, 3ø, 4W, EPA TIER 3

THE GENERATOR SHALL BE PROVIDED WITH THE FOLLOWING:

- OVERLOAD PROTECTION CIRCUIT BREAKER
- REMOTE ALARM ANNUNCIATOR SYSTEM
- EMERGENCY STOP PUSHBUTTON
- ENGINE INSTRUMENTS SHOWING:
 - ENGINE WATER TEMPERATURE
 - LUBE OIL PRESSURE
 - LUBE OIL TEMPERATURE
 - ENGINE RUNNING HOURMETER
 - BATTERY CHARGING INDICATOR
 - ENGINE FAULT INDICATORS

- ENGINE MOUNTED RADIATOR
- SAFETY CONTROLS TO SHUT DOWN THE ENGINE FOR THE FOLLOWING:
 - LOW LUBRICATING OIL PRESSURE
 - LOW WATER LEVEL
 - HIGH/LOW WATER JACKET TEMPERATURE
 - ENGINE OVER SPEED
 - ENGINE OVERCRANK

- RESIDENTIAL GRADE SILENCER
- WATER JACKET HEATER, 1500W MINIMUM
- ISOCHRONOUS GOVERNOR
- BATTERY CHARGER (10 AMPS), LEAD ACID BATTERIES, BATTERY RACK & CABLES AND CLAMPS

- GENERATOR CONTROL PANEL WITH THE FOLLOWING:
 - RECESSED FRONT PANEL HINGED
 - RUBBER ISOLATOR
 - A.C. VOLTMETER, AMMETER, DIAL TYPE FREQUENCY METER
 - FUSES
 - THREE POSITION SELECTOR SWITCH: MANUAL, OFF/RESET & AUTO
 - BATTERY CHARGING VOLTMETER
 - ENGINE WATER TEMPERATURE GAUGE
 - OIL PRESSURE GAUGE
 - D.C. CIRCUIT BREAKER
 - SHUTDOWN INDICATORS FOR ALARMS INDICATED ABOVE

3000 GALLON IN BASE DOUBLE WALL DIESEL FUEL TANK, CAPABLE OF MINIMUM RUN TIME OF 168 HOURS. FUEL TANK SHALL BE A CUSTOM MADE FUEL TANK. 14" L x 9'-0" W x 3' H TO FIT THE ROOM. GENERATOR SHALL REST ON TOP OF TANK WITH SUPPORTS. PROVIDE STAIRS TO ACCESS TOP OF TANK IN GENERATOR ROOM.

1 YEARS MANUFACTURERS WARRANTY AND A 5 YEAR ENGINE WARRANTY

THE GENERATOR SHALL BE PROVIDED WITH AN AUTOMATIC STARTING SYSTEM TO PROVIDE MULTIPLE CRANK/RESET CYCLES. OPERATION SHALL BE INITIATED THROUGH CLOSING OF CONTACTS IN THE AUTOMATIC TRANSFER SWITCH.

THE ENTIRE STANDBY SYSTEM SHALL BE TESTED WITH A DRY RESISTIVE LOAD BANK WHICH IS CAPABLE OF INCREMENTAL LOADING AND INCORPORATES A.C. VOLTMETER, AMP METER, FREQUENCY METER AND KILOWATT METER SO THAT NAME-PLATE RATINGS OF GENERATOR SET MAY BE VERIFIED. TEST SYSTEM AT FULL RATED OUTPUT FOR A PERIOD OF 4 HOURS.

THE GENERATOR SHALL BE PROVIDED WITH A BI-FUEL SYSTEM BY GTI-ALTRONIC (OR APPROVED EQUIVALENT). THE CONTRACTOR SHALL COORDINATE THE INSTALLATION OF THE SYSTEM WITH THE GENERATOR MANUFACTURER. SEE BI-FUEL LIT APPLICATION & CONTENT CHART THIS SHEET FOR SYSTEM SIZE. SEE ADDITIONAL INFORMATION ON SHEET E-7.5.

TRANSFER SWITCH SEQUENCE OF OPERATION

COMMERCIAL POWER LOSS:

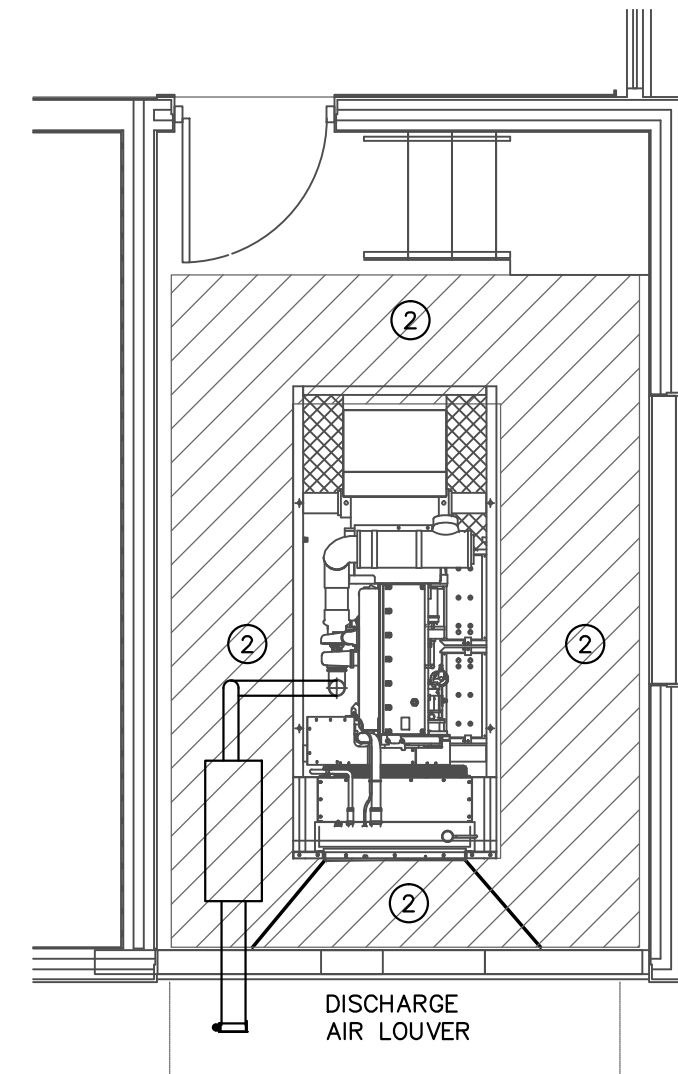
THE TRANSFER SWITCH SHALL MONITOR COMMERCIAL POWER. UPON COMMERCIAL POWER LOSS, THE TRANSFER SWITCH SHALL SEND A START SIGNAL TO THE GENERATOR. THE GENERATOR SHALL START, UPON CORRECT VOLTAGE & FREQUENCY, THE TRANSFER SWITCH SHALL TRANSFER ALL LOADS TO THE GENERATOR. ALL LOADS MUST BE TRANSFERRED WITHIN 10 SECONDS OF POWER LOSS.

PHASE LOSS:

THE TRANSFER SWITCH SHALL MONITOR COMMERCIAL POWER FOR PHASE LOSS. UPON COMMERCIAL POWER SOURCE LOSS OF ANY PHASE, THE TRANSFER SWITCH SHALL SEND A START SIGNAL TO THE GENERATOR. UPON CORRECT VOLTAGE AND FREQUENCY OF THE GENERATOR SOURCE, THE TRANSFER SWITCH WILL TRANSFER ALL LOADS TO THE GENERATOR WITHIN 10 SECONDS OF PHASE LOSS.

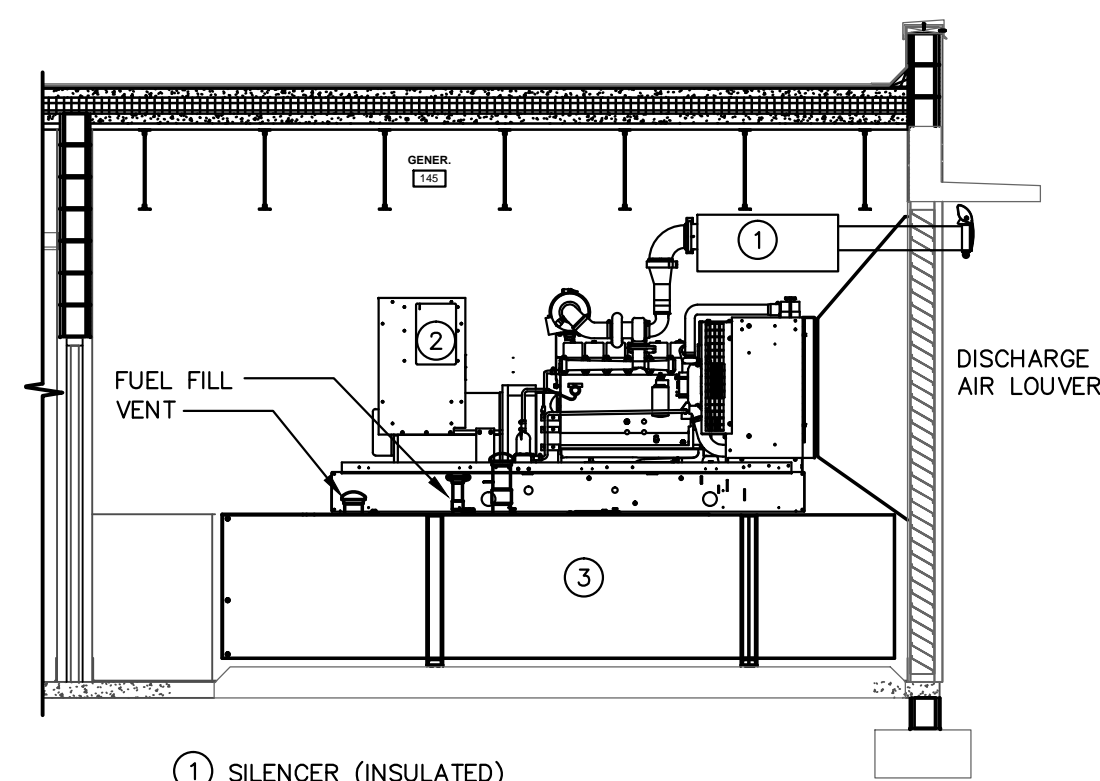
COMMERCIAL SOURCE RETURN:

UPON RETURN OF COMMERCIAL SOURCE, THE TRANSFER SWITCH SHALL MONITOR COMMERCIAL POWER SOURCE FOR 25 MINUTES. IF AFTER 25 MINUTES, COMMERCIAL POWER IS STABLE, THE TRANSFER SWITCH SHALL RE-TRANSFER ALL BUILDING LOADS TO COMMERCIAL POWER AND SHALL START A 5 MINUTE COOL-DOWN OF THE GENERATOR. AFTER 5 MINUTES OF COOL-DOWN, THE TRANSFER SWITCH WILL STOP THE GENERATOR.



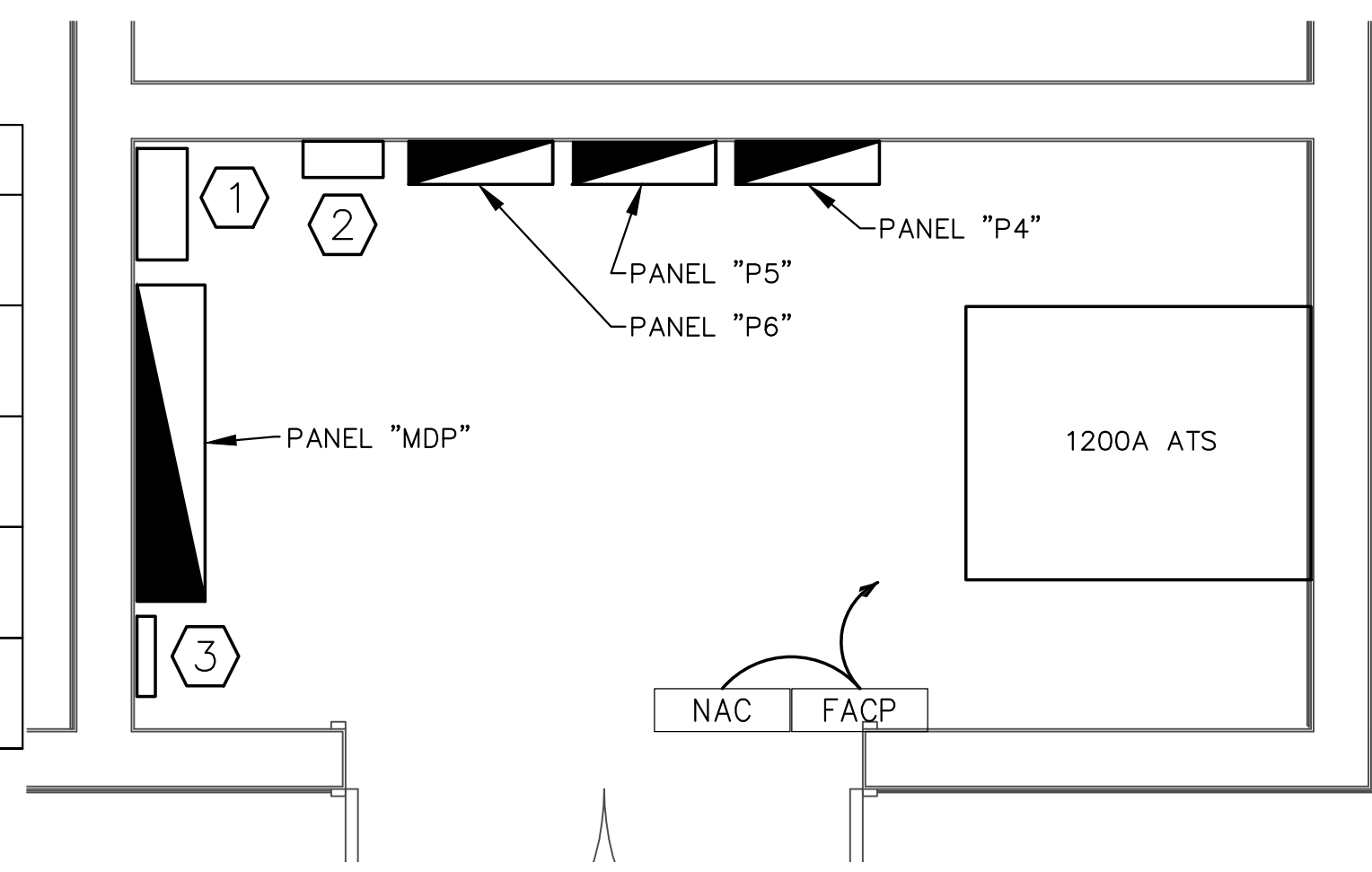
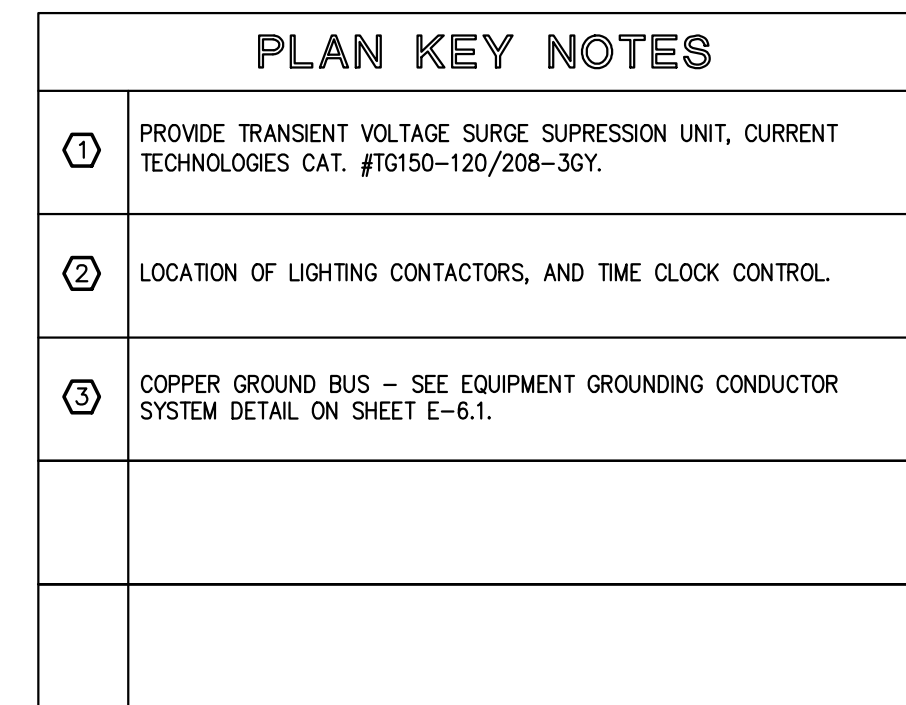
- 1 SILENCER (INSULATED)
- 2 IN BASE DOUBLE WALL 2500 GALLON DIESEL FUEL STORAGE TANK FUEL CONSUMPTION 17.6 GAL/HR

3 ENLARGED PLAN - 1ST FL. GENERATOR ROOM PLAN VIEW
E-7.3 1/4" = 1'-0"

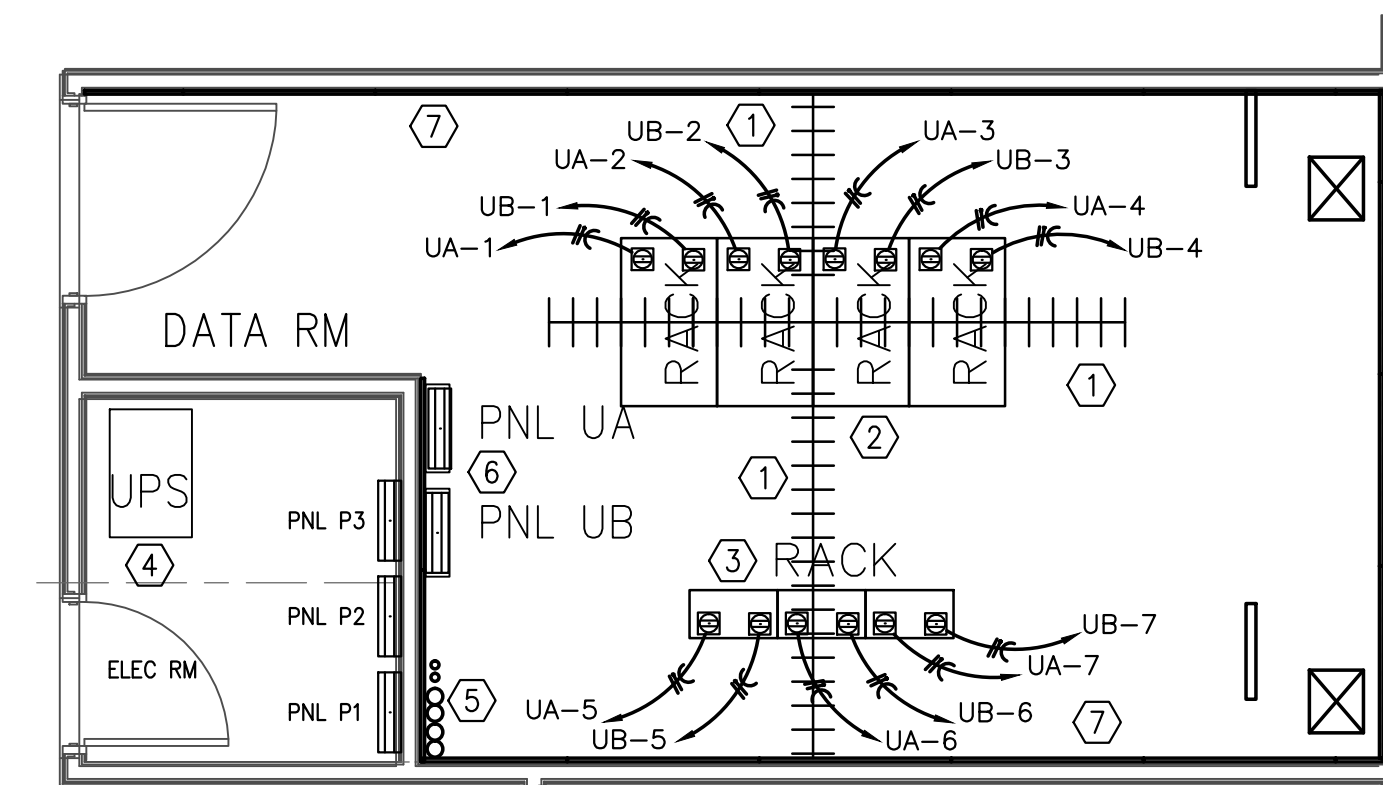


- 1 SILENCER (INSULATED)
- 2 GENERATOR CIRCUIT BREAKER
- 3 IN BASE DOUBLE WALL 2500 GALLON DIESEL FUEL STORAGE TANK FUEL CONSUMPTION 17.6 GAL/HR

4 ENLARGED SECTION PLAN GENERATOR ROOM
E-7.3 1/4" = 1'-0"



1 ENLARGED PLAN - 1ST FL. MAIN ELECTRICAL ROOM
E-7.3 1/2" = 1'-0"



- 1 CABLE TRAY
- 2 SERVER CABINET S (4)
- 3 TELCO RACK DEMARK
- 4 UPS LOCATION
- 5 TELCO SERVICE CONDUIT STUB UP
- 6 UPS ELEC PANELS
- 7 WOOD BACKBOARD

2 ENLARGED PLAN - 2ND FL. COMPUTER/DATA ROOM
E-7.3 1/4" = 1'-0"

Bi-Fuel Kit Application and Contents

GTI Series	Engine Power Rating	Engine Type	Gas Train Kit	Gas Mixers	GTI Series No.	Vibration Sensor(s)	STEPCON Option	CSA Certified**
25	Up to 75 kW	In-line engine	1" NPT	1 x 2"	2513-0E	NA	NA	No
	75-150 kW	In-line engine	1" NPT	1 x 4"	2514-1E	NA	NA	No
					2514-1A	Opt. (1)	NA	No
50	75-150 kW	In-line engine	1" NPT	1 x 4"	5014-0E	NA	NA	No
					5014-1A	Opt. (1)	NA	Yes
	150-300 kW	In-line engine	DN50 / 2" NPT	1 x 5"	5015-0E	NA	NA	No
65	300-600 kW	In-line or V-engine, com. manifold	DN65 / 2.5" NPT	1 x 6"	6516-1B	Std. (2)	Optional	Yes
					6526-1B	Std. (2)	Optional	Yes
	600-1200 kW	V-engine, common manifold	DN65 / 2.5" NPT	2 x 6"	6528-2B			
6546-2B								
6546-2C								
80	1200-3000 kW	V-engine, dual manifold	DN80 / 3" NPT	4 x 6"	8047-2B			
					8047-2C			
	V-engine, quad manifold	DN80 / 3" NPT	4 x 7"	8047-2B				
8047-2C								

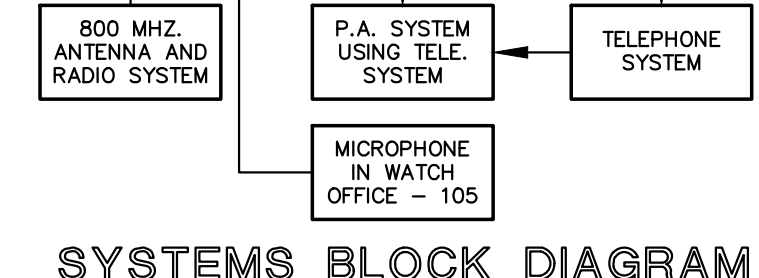
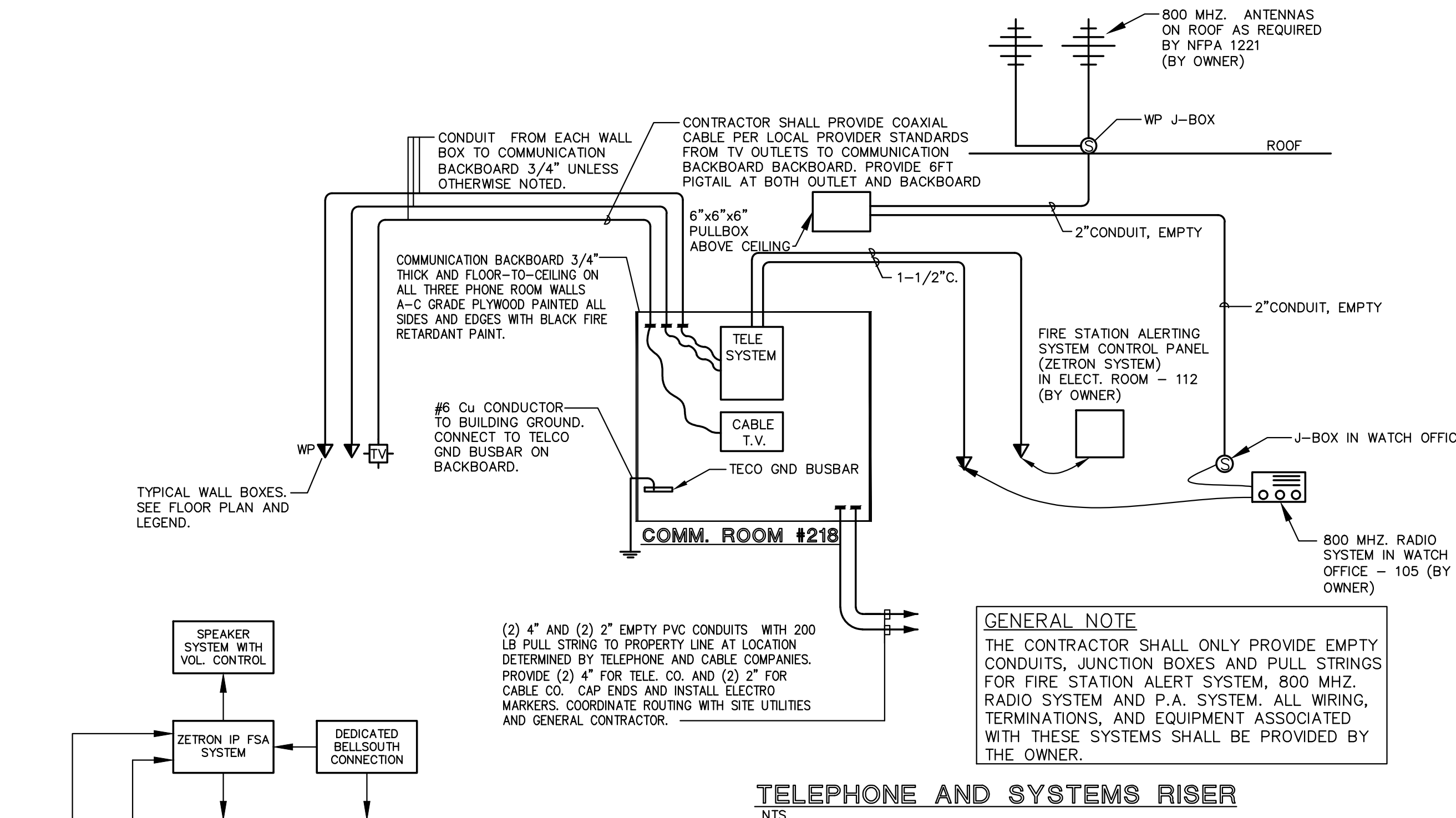
* Series 25 kits require 120V Power; all other Series require 240V power.
** CSA CERTIFIED CLASS 1, DIV. 2, GROUP D System available - contact Altronic sales office for details.

- No engine modifications required
- No power or efficiency losses
- Low cost and easy to install
- Reduces operating costs
- Extends run-time of standby engines
- Lowers emissions
- Does not require high-pressure gas supply
- Allows use of interchangeable gas
- State-of-the-art controls and monitoring

altronic
www.gti-altronic.com

HOERBIGER
Altronic, LLC - A Member of the HOERBIGER Group

712 Trumbull Avenue
Gardner, Ohio 44420 USA
P: 330-545-9766
F: 330-545-3231
Form GTI 1-12



GENERAL NOTE
THE CONTRACTOR SHALL ONLY PROVIDE EMPTY CONDUITS, JUNCTION BOXES AND PULL STRINGS FOR FIRE STATION ALERT SYSTEM, 800 MHZ. RADIO SYSTEM AND P.A. SYSTEM. ALL WIRING, TERMINATIONS, AND EQUIPMENT ASSOCIATED WITH THESE SYSTEMS SHALL BE PROVIDED BY THE OWNER.

CURRIE SOWARDS AGUILA architects
Architecture, Planning, Interiors, & Sustainable Design
AA26001584
185 NE 4TH AVENUE SUITE 101
DELRAY BEACH, FL 33483
T: (561) 276-4951 F: (561) 243-8184
E-MAIL: office@csa-architects.com

ISSUED FOR : DRC 10-13-14
BIDS
PERMIT 04-09-2015
CONSTRUCTION
SEAL
PROJECT TITLE
CITY OF HALLANDALE BEACH FIRE RESCUE STATION 7

111 FOSTER ROAD
HALLANDALE BEACH, FL 33009

NUM.	DESCRIPTION	DATE
1	BUILDING DEPT. COMMENTS	05/15/15
3	BLDG DEPT. COMM./COORDINATION	07/10/15
5	ADDENDUM	09/14/15

THIS PROJECT HAS BOOK SPECIFICATIONS THAT ARE AN INTEGRAL AND COMPLIMENTARY PART OF THE OF THE CONSTRUCTION DOCUMENTS.
THESE DRAWINGS ARE PREPARED PER ESTABLISHED INDUSTRY STANDARDS AND REPRESENT THE ARCHITECT AND ENGINEERS DESIGN CONCEPT. THEY ARE NOT INTENDED TO PROVIDE EVERY DETAIL OR CONDITION REQUIRED TO CONSTRUCT THE BUILDING. THE CONTRACTOR THROUGH SUBMITTALS AND OTHER COORDINATION EFFORTS IS FULLY RESPONSIBLE FOR PROVIDING A COMPLETE AND OPERATIONAL BUILDING WHETHER INDICATED ON THE PLANS OR NOT.

FILE NUMBER
14069 E-7.3.DWG

ELECTRICAL DETAILS AND ENLARGED PLANS

DATE 01/14/2015 | DRAWN BY MB,DJM,AD
JOB NUMBER 140403/14069
DRAWING NUMBER
E-7.1

TYECO
HVAC PLUMBING ELECTRICAL
THOMPSON & YOUNGROSS ENGINEERING CONSULTANTS, LLC
CERTIFICATE OF AUTHORIZATION NO. 25996
112 SOUTHEAST 10th STREET
DELRAY BEACH, FL 33483
www.tyeflo.com
TEL: 561-274-0200
FAX: 561-274-0222
E-MAIL: tyc@tyeflo.com

BID SET 7-24-2015

THIS DOCUMENT IS THE PROPERTY OF CURRIE SOWARDS AGUILA ARCHITECTS INC. ALL RIGHTS ARE RESERVED. ANY POSSESSION, REPRODUCTION OR OTHER USE OF THIS DOCUMENT, WITHOUT THE WRITTEN CONSENT OF CURRIE SOWARDS AGUILA ARCHITECTS INC., IS PROHIBITED.